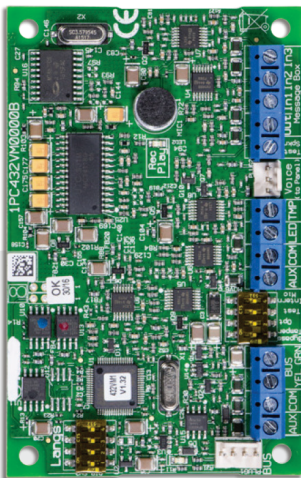


LightSYS™ 2 Accessories

LightSYS™ Voice Module

Model RP432EV

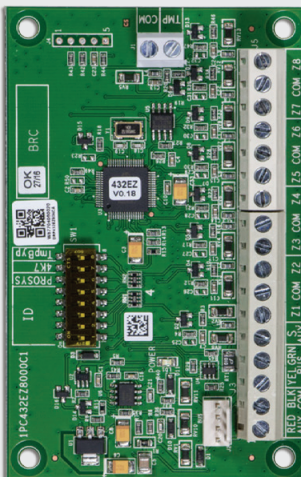


The Voice Module gives LightSYS panels the ability to verify alarms or reduce false alarms via two-way voice communication with the Central Station, for PSTN only installs. The Voice Module also add voice annunciation for zones & system state.

Power	13.8 VDC +/- 10%
Current Consumption	25 mA, typical / 160 mA, max.
Main Panel Connection	RS485, 4 Wire Bus, up to 984 ft. (300m) from Main Panel
Contacts	Open Collector, Active Pull-Down, 70 mA max.
Dimensions	105 mm x 66 mm x 18 mm (4.13" W x 2.6" H x 0.71" D)
Operating Temperature	-10°C to 55°C (14°F to 131°F)
Storage Temperature	-20°C to 60°C (-4°F to 140°F)

LightSYS™ 8 Zone Expander

Model RP432EZ



Adds an additional 8 wired zones to the LightSYS panel. Installs on the keypad BUS to accommodate remote mounting for easier wire runs. Also compatible with ProSYS Plus.

Power	13.8 VDC +/- 10%
Max Current Consumption	25 mA, typical / 30 mA, maximum
Main Panel Connection	RS485, 4 Wire Bus, up to 984 ft. (300m) from Main Panel
Auxiliary Outputs	AUX: Dry contact relay (24V, 1 Amps)
Dimensions	4.13" W x 2.6" H x 0.71" D (105 mm x 66 mm x 18 mm)
Operating Temperature	-10°C to 55°C (14°F to 131°F)
Storage Temperature	-20°C to 60°C (-4°F to 140°F)



LightSYS™ Wireless Receiver

Model RP432EW



The LightSYS™ Wireless Receiver supports up to 32 wireless detectors or panic/zone keyfobs, 16 rolling code keyfobs, 2 Wireless Keypads and 3 Wireless Sounder. It includes two utility outputs and can also be used in stand-alone mode. The receiver is installed as a Bus device, allowing the receiver to be installed in an optimal area to maximize wireless range.

Power	13 V DC +/- 10%
Current Consumption	Typical 40 mA, Maximum 65 mA
Main Panel Connection	RS485, 4 Wire Bus, up to 1,000 ft. (300m) from Main Panel
Relay Outputs	Two 12 V DC @ 1 A Max, Dry Contact Relays
Frequency	868.65 MHz or 433.92 MHz
Dimensions	75 mm W x 125 mm H x 25 mm D (3.07" W x 4.9" H X 1" D)
Operating Temperature	0°C to 49°C (32°F to 120°F)
Storage Temperature	-20°C to 60°C (-4°F to 140°F)