



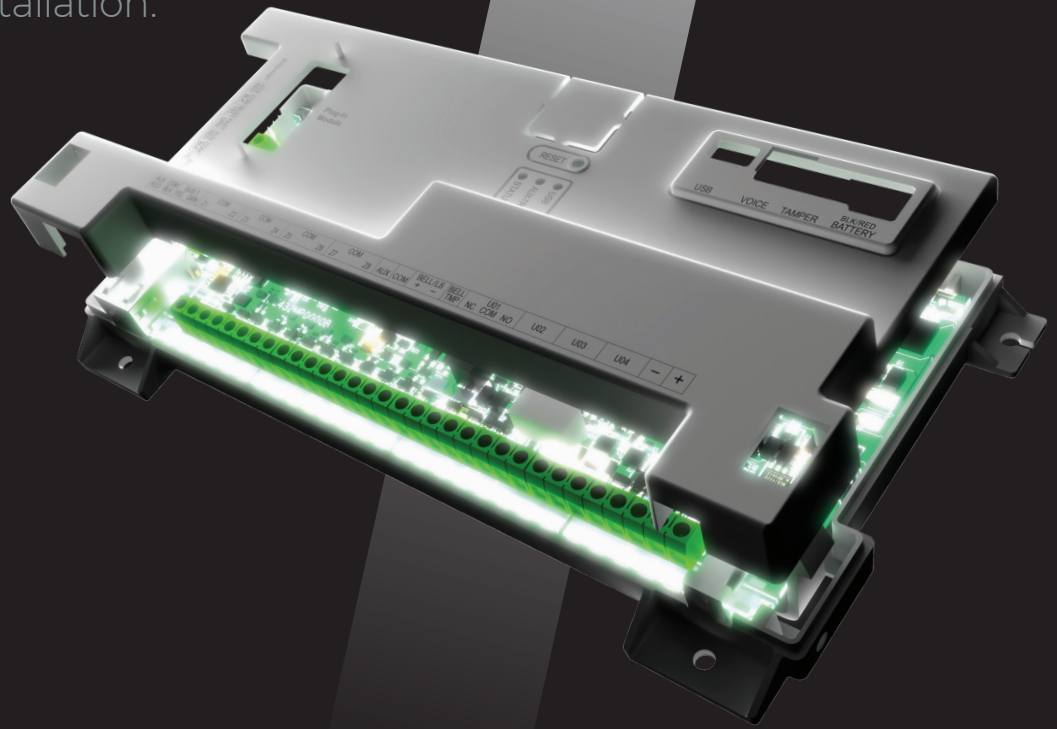
A LIFETIME OF SECURITY

FLEXIBLE. SMART. POWERFUL.

# LightSYS+

## The Most Powerful Hybrid Security Panel

A world of possibilities for every type and size of installation.



The new LightSYS+ is RISCO's flagship hybrid alarm panel, combining the features and benefits of both LightSYS 2 and ProSYS Plus into one high-powered security system. It is designed to protect any size or type of Grade 2 or Grade 3 installation - enabling up to 512 zones in one single panel!

**Flexible** enough to cover complex locations with hundreds of zones.

**Smart** enough to distinguish real events from false alarms.

**Powerful** enough to integrate with multiple equipment types.

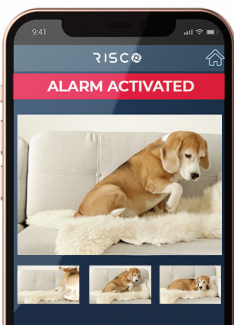
**One panel - infinite solutions.**

# LightSYS+ is not just a mega technology upgrade, it's your business upgrade.

## Up to 512 zones for any type and size of installation

The new LightSYS+ allows you maximum flexibility and fits any type or size of installation. LightSYS+ is **agile**. It adapts to site needs and can grow seamlessly up to an amazing 512 zones in any combination from one panel if required.

LightSYS+ **builds on the best** of LightSYS and ProSYS Plus. It **empowers** you to meet customer requirements in anything from Grade 2 residential to large Grade 3 commercial projects featuring high security, at a highly competitive price.



## New! Wireless Visual Verification

Real time event verification, delivered by indoor and a revolutionary outdoor camera detector, provides a series of high resolution, full color images, and a short clip. These are sent directly to the end-user's smartphone App or to monitoring stations, allowing them to verify the nature of the alarm and act accordingly.

## Maximize Operational Efficiency

With the new LightSYS+ you can manage your business faster and smarter by using a single security system that allows you to perform all types and sizes of installation.

A single solution means staff work smart.

**Focus brings expertise.** Engineers excel with **one versatile system**, carry a single set of spares and, a single manual, and there is just one source of responsive support - RISCO. Simplified staff training **improves your bottom line.**

## Remote Services Save Time & Money

Using RISCO Cloud and configuration software you can give premium service remotely and reduce site visits so helping meet Covid site protocols. The software empowers you to configure systems and perform automated batch operations and preventative maintenance.



# New Mechanical Design!

## Main Panel Plastic Protective Coverage

We aspired to develop a stronger, more durable, and more installer-friendly panel. The main LightSYS+ panel and other components are shielded by a robust plastic casing with optimum protection. This minimises the possibility of any damage occurring during the transportation or installation process.



### Plug-in 2G/4G/GSM module

Durable plug in modules line for fast and easy connecting to the main board.

### Built-in Wi-Fi module

A built-in Wi-Fi Module offers a convenient solution for faster installations, without the need to wire a LAN cable to the control panel.

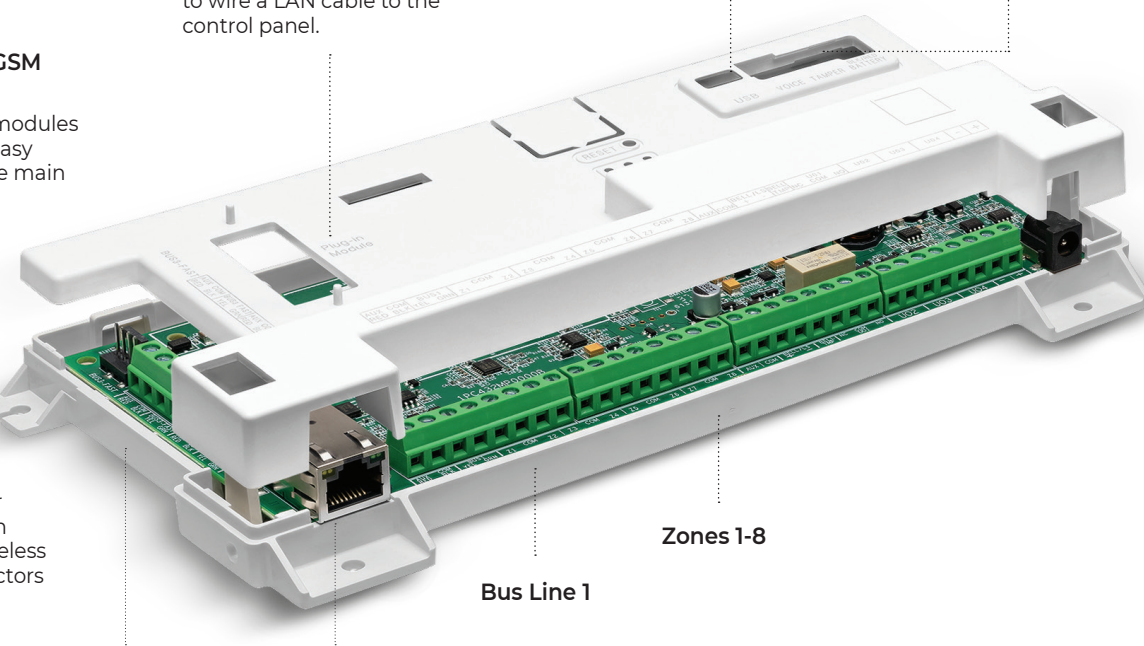
### USB TYPE-C

New input connectivity with fast and regular USB TYPE-C.

**New inputs location:**  
Voice, Tamper,  
Back-up battery

### Fast-Bus Line 3

Now allows faster data transmission and supports wireless PIR camera detectors installation.



### Bus Line 2

Additional regular Bus line for more flexible and wider installation.

### Built-in IP module

IP module already on main board to ensure fast and stable connectivity.

## Built-In IP Module & Wi-Fi Module

IP and Wi-Fi as integrated features (not add-ons) means the panel has **optimum flexibility**. Installers can work with Ethernet using the IP module on complex projects that involve video alerts, access control and smart automation. In these instances, communication between units must be fast and continuous. When the IP option provides stability, customers can benefit from RISCO Cloud security infrastructure.

The Wi-Fi module offers a convenient solution for fast and wire-free installations.

## Technical Specifications

Parameter	Description
EN 50131 certified	Grade 2 or 3 (according to the installation)
Zones	8 – 512
Wireless zones	256
PIR cameras detectors	32
IP cameras	Unlimited
Partitions	32 + 4 groups per partition
Bus lines	2+1 fast Bus for faster photo and image transfer
Bus devices per Bus line	32
Wired keypads	32
Wireless keypads	32
Keyfobs (1 or 2-Way)	256
Proximity key readers	48
Wireless sirens	32
Wired sirens	24
Programmable outputs	4-196
User codes	500
MS destinations	3
Follow me destinations	64
Event log	2000
Reporting format	Contact ID, SIA level 2 & 3 (text support), IP/GSM Receiver, SIA IP (with encryption)
EOL zone resistance	Selectable on the panel for easy retrofit
Plug-in communication modules	2G or 4G modules, PSTN (will be released Q3 2022)
Enclosure	Small or Large Polycarbonate box or large Metal cover box
Installer programming methods	-Local using the keypad -Local using standard USB Type-C for Configuration Software -Remote using Configuration Software, via IP/Cellular or Cloud
Remote diagnostics and configuration	On Bus device and 2 -Way Wireless device, using Configuration Software
Firmware upgrade	Remote via cellular or IP

### IP module on-board

IP module ensures a fast and stable connection. Use IP as the primary connection and an optional 2G/4G plug-in module as a backup for a high level of security. This also allows for reducing the GSM data usage cost.

- Current Consumption: 60 mA standby, 115mA max.

### Wi-Fi module on-board

A built-in Wi-Fi Communication module offers a convenient solution for faster installation by saving the need to wire a LAN cable to the Control Panel.

- WiFi 802.11 b/g/n 2.4 GHz
- Current Consumption 60 mA standby, 115mA max.