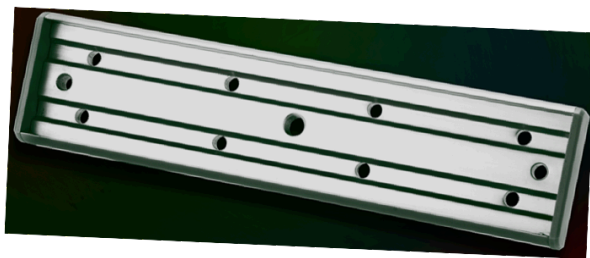




602-SL EML



AH-275 BRACKET

Slimline Electro-Magnetic Lock 600lbs

A quality Slimline Electromagnetic lock which has a range of accessories to suit most type of applications. The armature and electromagnet when energised holds the doors securely fastened, this is achieved by creating a powerful magnetic field and will unlock once de-energised.

Type of Doors supported:

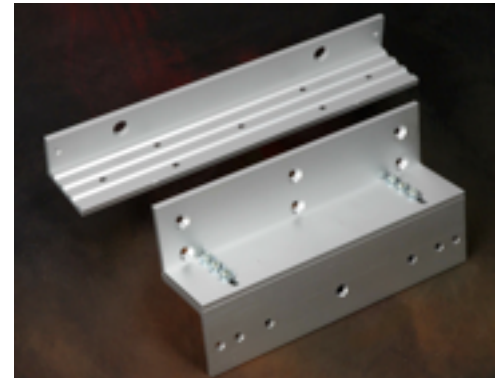
Wooden or glass doors, fire doors with frame by adding accessories like ZL brackets or U-Channel brackets and the AH-275 brackets.

Door Switch Status:

Provides NO and NC contacts for door status monitoring.

Lock Status Indicator:

LED indication is provided for lock status, if lock is not aligned or low voltage, LED will indicate red.



ZL-602 BRACKET



U1-275 BRACKET

Product Specifications:

- Available in 12/24VDC.
- Holding force up to 600lbs per door.
- Double screw mounting.
- Face locking screw for higher security.
- Low maintenance
- Low energy consumption.
- Silent, continuous duty operation.
- Suitable for access control, fire emergency exits and escape doors.
- Magnet Size (mm): 250(L) x 25(W) x 50(W) (inclusive of mounting plate)
- Armature size (mm): 180(L) x 40(W) x 11(D)