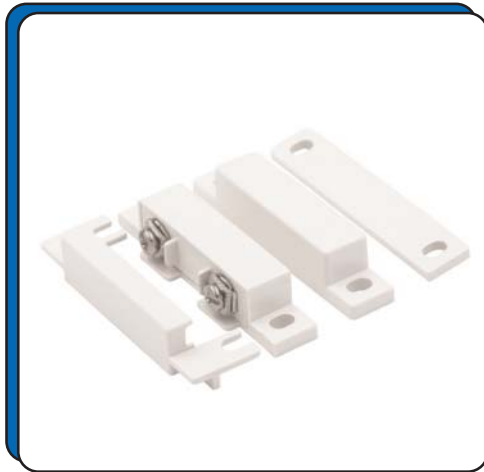
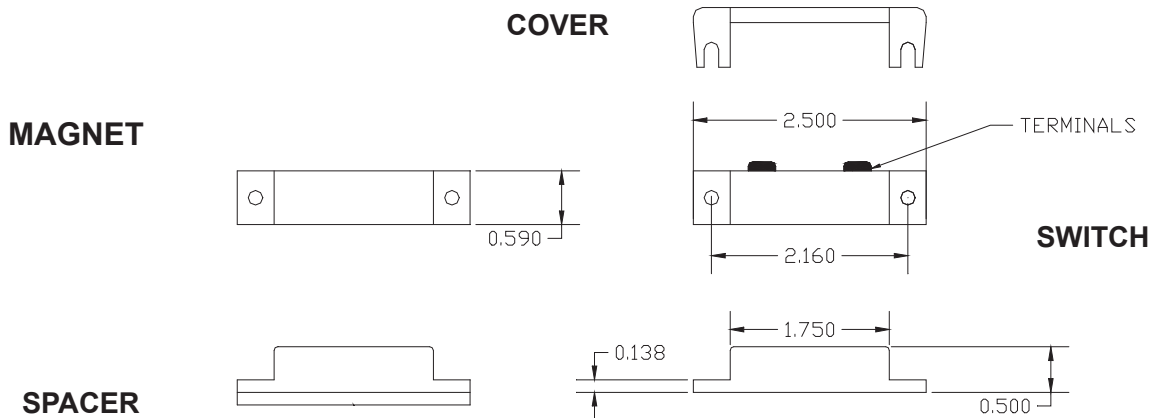


**2 1/2" LONG SURFACE MOUNT BIASED  
HIGH SECURITY MAGNETIC CONTACT  
1000-24B SERIES**



**FEATURES:**

- \* 2 1/2" Long Screw Mount Magnetic Contact
- \* Terminals
- \* Biased for High Security
- \* Colors: White, Brown and Gray
- \* Contacts and Magnets available separately
- \* E.O.L. Resistors, Diodes and Supervisory Loops Available
- \* Lifetime Warranty
- \* Safety Approvals



Part Number	Loop Type	Electrical Configuration	Gap (Inch)	Maximum Initial Contact Resistance (Ohm)	Maximum Contact Rating (W)	Maximum Switching Voltage (VDC/VAC)	Maximum Switching Current (A)
1000-24B	Closed	N/O	0.40" - 0.80"	.100	3	30	.200
1000-34B	Open/Closed	SPDT	0.40" - 0.80"	.100	3	30	.200
1000-24WB	Closed	N/O	0.80" - 1.20"	.100	3	30	.200
1000-34WB	Open/Closed	SPDT	0.80" - 1.20"	.100	3	30	.200