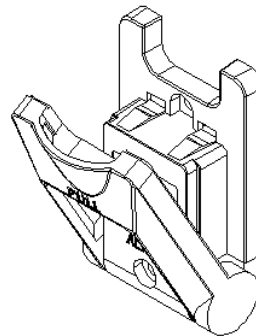
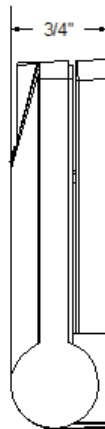
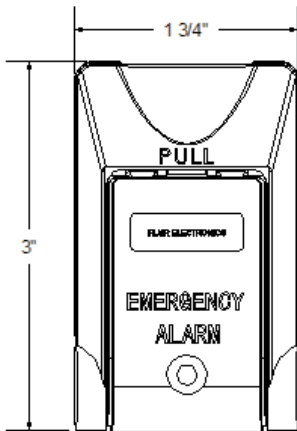


**1 3/4" WIDE X 3" LONG
SURFACE MOUNT PANIC SWITCH
FLR-3045 SERIES**



FEATURES:

- * 3" Long Surface Mount Panic Switch
- * 18" #22 AWG Leads
- * Potted Switch and Magnet for Maximum Resistance to Corrosion
- * Screw Mount
- * White ABS Fire Retardant Case
- * Lifetime Warranty
- * Internal Magnetic Switch Safety Approvals



WIRE COLOR CODE		
Common	Closed	Open
Green	Red	White

Part Number	Loop Type	Electrical Configuration	Maximum Initial Contact Resistance (Ohm)	Maximum Contact Rating (W)	Maximum Switching Voltage (VDC/VAC)	Maximum Switching Current (A)
FLR-3045	Closed	N/O	.100	10	100	.500
FLR-3045-SPDT	Open/Close	SPDT	.100	3	30	.200